

## 2693 - VIENNA

### Product Description:

2693 Vienna is a classic wicker structure inspired by the traditional Viennese braid that comes with a closed surface. The embossing depth has a max. of 1,3mm

### Composition:

2693 Vienna is an embossed panel with special developed veneer and melamine resins with a particle board core.

### Fields of application:

Only for interior: Wall cladding, Interior fitout, shop and fair construction, doors.

### Technical Data:

First given measurement specifies the direction of embossment:

Invoiced size (mm): 2450 x 1050

Delivered size (mm): 2450 x 1050

Repeating pattern: No repeating pattern

Available thicknesses: 18,5 mm

Coreboard: Particle Board

Surface: raw, unlacquered

Density: ca. 825 kg/m<sup>3</sup>

Weight: ca. 16 kg/m<sup>2</sup>

Embossment: one side

Deepness of structure: max. 1,3 mm

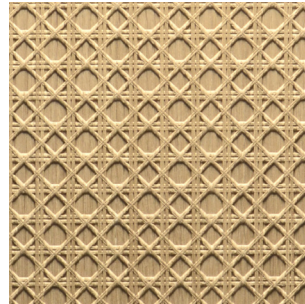
### Tolerances:

Straightness: 3,0 mm per Meter

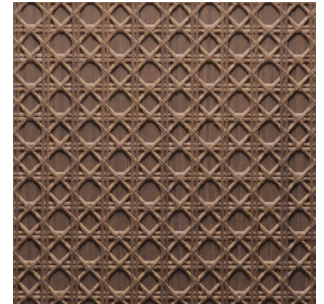
Size accuracy: +/- 1,0 mm per Meter

Thickness allowance: +/- 0,5 mm

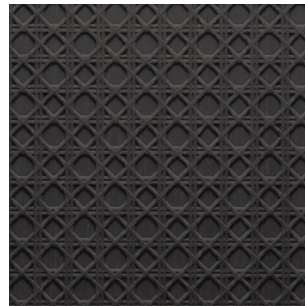
Exactitude of profile: +/- 1,5 mm



**Knob oak**  
Real wood veneer



**Heartwood walnut**  
Real wood veneer



**Black**  
Fineline veneer

### Explanatory notes:

The given details in this data sheet are our field-tested experience. They could not consider any parameter, use case or application and they are therefore without commitment. These data does not represent guarantee of condition in the legal sense or a assurance of the characteristics. No legal claims could be derived by using the information given in these data sheets or by our free of charge technical consultants. Images are for illustration purposes only. Wood is a natural product, deviations in color and texture can occur. Please visit our website for an impression of the color range, which can be expected.

Last update: 29.11.2024